



Liftcrane Boom Capacities

26 100 kg Crane Counterweight
6 500 kg Carbody Counterweight
Extended Position Crawlers
360 Degree Rating

Meets
ASME B30.5
Requirements

8500-1

LIFTING CAPACITIES:

1. Rated loads included in the charts are the maximum allowable freely suspended loads at a given boom length, boom angle and load radius, and have been determined for the machine standing level on firm supporting surface under ideal operating conditions. The user must limit or de-rate rated loads to allow for adverse conditions (such as soft or uneven ground, out-of-level conditions, wind, side loads, pendulum action, jerking or sudden stopping of loads, inexperience of personnel, and multiple machine lifts).
2. Capacities do not exceed 75% of minimum tipping loads. Capacities based on factors other than machine stability such as structural competence are shown by asterisk * in the charts.
3. Attempting to lift more than rated loads may cause machine to tip or collapse. Do not tip machine to determine capacity.
4. Do not attempt to lift where no radius on load chart is listed as crane may tip or collapse.
5. Weight of hooks, hook blocks, slings and other lifting devices beneath boom and jib point sheaves are part of the total load. Their total weight must be subtracted from the rated load to obtain the weight that can be lifted.
6. Load radius is horizontal distance from axis of rotation to center of gravity of the freely suspended load. Boom angle is angle between horizontal and centerline of boom butt and inserts, and is an indication of radius. In all cases, operating radius shall govern capacity.
7. Least stable position is over the side.
8. Boom point elevation is vertical distance from ground level to centerline of boom point shaft.
9. Upper boom point capacity for liftcrane service with single part line is 7 700 kg. In all cases, upper boom point capacities cannot exceed those listed for Liftcrane Boom capacity reduced by 200 kg.

10. When lifting over boom point with jib or upper boom point, rated loads for the boom must be reduced as shown below:

Jib length (m)	Upper Boom Point	9,1 m	12,2 m	15,2 m	18,3 m
Deduct (kg)	200	1 100	1 500	2 000	2 400

11. Lifting capacities listed apply only to the machine as originally manufactured and designed. Modifications to this machine or use of equipment other than that specified can reduce operating capacity.
12. Machine travel with load (pick and carry).
 - A. Travel with crane upperworks in-line with crawlers. Grade in any direction must not exceed 1 percent (0.5 degrees).
 - B. Travel surface must be firm, level and uniformly supporting. Capacity charts are based on static conditions; therefore judgment must be used to allow for dynamic effects of traveling with load. Carry load as close to ground as possible. Stabilize load with taglines. Travel slowly and smoothly to avoid shock loading boom, jib and rigging.
13. To lift the maximum capacity of 80 000 kg, the Upper Boom Point must be used.

S/N: 8501896



Liftcrane Boom Capacities

26 100 kg Crane Counterweight
6 500 kg Carbody Counterweight
Extended Position Crawlers
360 Degree Rating

Meets
ASME B30.5
Requirements

8500-1

OPERATING CONDITION:

- The machine must be reeved and set-up as stated in the Operator Manual. If this manual is missing, obtain replacement.
 - Boom backstops are required for all boom lengths.
 - Gantry must be fully raised position for all operation.
 - Crawlers must be fully extended and be locked in position.
 - The crane must be leveled to within 1% on a firm supporting surface.
 - Refer to operator manual for operating guidelines.
- The total load that can be lifted over a jib is limited by the rated jib loads.

- See Operator Manual Section 6 for Wire Rope Specifications.
- Machine equipped with 6 280 mm crawlers, 900 mm treads, 12 parts of boom hoist reeving, 26 100 kg crane counterweight and 6 500 kg carbody counterweight.

Hoist Reeving for Main Boom Loads

No. of Parts of Line	1	2	3	4	5
Maximum Loads (kg)	7 700	15 400	23 100	30 800	38 500

No. of Parts of Line	6	7	8	9	10
Maximum Loads (kg)	46 200	53 900	61 600	69 400	80 000

Hoist Reeving for Upper Boom Point

No. of Parts of Line	1
Maximum Loads (kg)	7 700

Operation of this equipment in excess of rated loads or disregard of instruction voids the warranty.

Maximum Boom and Jib Lengths Lifted Unassisted			
Over End of Blocked Crawlers		Over End of Crawlers	
Boom Length	Jib Length	Boom Length	Jib Length
61,0 m (a)	—	61,0 m (a)	—
57,9 m	—	57,9 m	—
54,9 m	18,3 m	51,8 m	18,3 m

Load block, hook and weight ball on ground at start.
(a) Upper boom point cannot be attached on 61,0 m boom.
Jibs can only be mounted on 24,4 m to 54,9 m booms.



Liftcrane Boom Capacities

26 100 kg Crane Counterweight
6 500 kg Carbody Counterweight
Extended Position Crawlers
360 Degree Rating

Meets
ASME B30.5
Requirements

8500-1

Load Radius (m)	Boom Angle (deg)	Boom Point Elev. (m)	360° Rated Load (kg)
12,2 m Boom			
3,0	81,70	13,79	80 000 *
3,5	79,59	13,71	76 300 *
4,0	77,18	13,59	69 500 *
4,5	74,75	13,46	62 200 *
5,0	72,29	13,30	56 300 *
5,5	69,79	13,12	51 200 *
6,0	67,25	12,92	45 400
7,0	62,00	12,42	35 900
8,0	56,48	11,80	29 500
9,0	50,56	11,04	25 100
10,0	44,06	10,09	21 700
12,0	27,57	7,22	16 400 *
12,1	25,50	6,82	15 700 *
15,2 m Boom			
3,6	81,10	16,78	75 400 *
4,0	79,78	16,71	69 400 *
4,5	77,86	16,61	62 100 *
5,0	75,93	16,48	56 200 *
5,5	73,97	16,34	51 100 *
6,0	72,00	16,18	45 300
7,0	67,98	15,80	35 800
8,0	63,83	15,34	29 400
9,0	59,53	14,78	25 000
10,0	55,02	14,12	21 600
12,0	45,10	12,40	17 000
14,0	32,93	9,87	13 900 *
15,2	22,70	7,44	12 100 *
18,3 m Boom			
4,0	81,60	19,81	69 300 *
4,5	79,91	19,72	62 000 *
5,0	78,31	19,62	56 100 *
5,5	76,71	19,50	51 100 *
6,0	75,09	19,37	45 200
7,0	71,81	19,06	35 700
8,0	68,46	18,69	29 300
9,0	65,04	18,24	24 800
10,0	61,51	17,73	21 500
12,0	54,04	16,44	16 800
14,0	45,77	14,71	13 800
16,0	36,07	12,36	11 600
18,0	23,10	8,74	10 000 *
18,2	20,60	8,02	9 700 *

Load Radius (m)	Boom Angle (deg)	Boom Point Elev. (m)	360° Rated Load (kg)
21,3 m Boom			
4,3	82,00	22,85	65 100 *
4,5	81,37	22,81	61 000 *
5,0	80,01	22,73	56 000 *
5,5	78,64	22,63	51 000 *
6,0	77,26	22,52	45 200
7,0	74,48	22,25	35 700
8,0	71,67	21,94	29 200
9,0	68,81	21,57	24 800
10,0	65,88	21,14	21 400
12,0	59,82	20,09	16 800
14,0	53,34	18,75	13 700
16,0	46,24	17,02	11 500
18,0	38,16	14,78	9 900
19,8	29,30	12,01	8 800
24,4 m Boom			
4,9	81,60	25,84	57 200 *
5,0	81,27	25,82	55 900 *
5,5	80,07	25,73	50 900 *
6,0	78,88	25,64	45 100
7,0	76,47	25,41	35 600
8,0	74,03	25,14	29 200
9,0	71,57	24,82	24 700
10,0	69,06	24,45	21 300
12,0	63,92	23,56	16 700
14,0	58,53	22,44	13 600
16,0	52,81	21,05	11 400
18,0	46,60	19,33	9 800
20,0	39,66	17,16	8 500
22,0	32,49	14,68	7 500
22,8	27,30	12,76	7 200
27,4 m Boom			
5,2	81,90	28,88	53 800 *
5,5	81,19	28,83	50 800 *
6,0	80,13	28,74	45 100
7,0	78,00	28,54	35 600
8,0	75,85	28,30	29 100
9,0	73,68	28,02	24 600
10,0	71,49	27,70	21 300
12,0	67,01	26,92	16 600
14,0	62,37	25,96	13 500
16,0	57,52	24,78	11 300
18,0	52,39	23,36	9 700
20,0	46,87	21,63	8 400
22,0	41,51	19,78	7 400
24,0	34,67	17,19	6 600
25,9	25,70	13,48	6 000

Load Radius (m)	Boom Angle (deg)	Boom Point Elev. (m)	360° Rated Load (kg)
30,5 m Boom			
5,7	81,50	31,87	46 100 *
6,0	81,13	31,83	44 600 *
7,0	79,22	31,65	35 500
8,0	77,29	31,44	29 100
9,0	75,35	31,19	24 600
10,0	73,40	30,90	21 200
12,0	69,42	30,22	16 500
14,0	65,34	29,37	13 400
16,0	61,11	28,34	11 200
18,0	56,70	27,12	9 600
20,0	52,06	25,66	8 300
22,0	47,67	24,15	7 300
24,0	42,31	22,12	6 500
26,0	36,33	19,64	5 800
28,0	29,31	16,50	5 300
28,9	24,30	14,63	5 000
33,5 m Boom			
6,0	81,80	34,91	41 900 *
7,0	80,21	34,76	35 500
8,0	78,47	34,56	29 000
9,0	76,71	34,33	24 500
10,0	74,95	34,08	21 200
12,0	71,37	33,46	16 500
14,0	67,71	32,70	13 400
16,0	63,96	31,79	11 200
18,0	60,07	30,71	9 500
20,0	56,03	29,44	8 200
22,0	52,27	28,15	7 200
24,0	47,79	26,45	6 400
26,0	42,96	24,45	5 700
28,0	37,63	22,06	5 200
30,0	31,56	19,13	4 700
32,0	23,20	15,29	4 300

S/N: 8501896



Liftcrane Boom Capacities

26 100 kg Crane Counterweight
6 500 kg Carbody Counterweight
Extended Position Crawlers
360 Degree Rating

Meets
ASME B30.5
Requirements

8500-1

Load Radius (m)	Boom Angle (deg)	Boom Point Elev. (m)	360° Rated Load (kg)
36,6 m Boom			
6,7	81,50	37,93	36 500 *
7,0	81,03	37,85	34 900 *
8,0	79,44	37,67	29 000
9,0	77,84	37,46	24 500
10,0	76,23	37,23	21 100
12,0	72,98	36,66	16 400
14,0	69,66	35,98	13 300
16,0	66,27	35,15	11 100
18,0	62,79	34,19	9 400
20,0	59,20	33,07	8 200
22,0	55,89	31,92	7 100
24,0	52,00	30,45	6 300
26,0	47,89	28,75	5 600
28,0	43,49	26,78	5 100
30,0	38,69	24,46	4 600
32,0	33,32	21,67	4 200
34,0	27,02	18,19	3 800
35,0	22,20	15,91	3 700
39,6 m Boom			
7,3	81,30	40,88	32 200 *
8,0	80,47	40,77	28 900
9,0	78,99	40,58	24 400
10,0	77,50	40,36	21 000
12,0	74,50	39,85	16 300
14,0	71,44	39,22	13 200
16,0	68,33	38,47	11 000
18,0	65,16	37,59	9 300
20,0	61,89	36,58	8 000
22,0	58,52	35,55	7 000
24,0	55,02	34,25	6 200
26,0	51,37	32,75	5 500
28,0	47,51	31,05	4 900
30,0	43,40	29,10	4 400
32,0	38,94	26,83	4 000
34,0	33,99	24,17	3 700
36,0	28,29	20,93	3 400
38,0	21,20	16,51	3 100

Load Radius (m)	Boom Angle (deg)	Boom Point Elev. (m)	360° Rated Load (kg)
42,7 m Boom			
7,3	81,90	43,97	27 900 *
8,0	81,16	43,86	27 400 *
9,0	79,79	43,68	24 400
10,0	78,42	43,48	21 000
12,0	75,64	43,01	16 300
14,0	72,82	42,43	13 200
16,0	69,97	41,74	11 000
18,0	67,05	40,93	9 300
20,0	64,08	40,01	8 000
22,0	61,02	39,08	7 000
24,0	57,87	37,90	6 100
26,0	54,60	36,57	5 400
28,0	51,20	35,06	4 900
30,0	47,62	33,35	4 400
32,0	43,82	31,41	3 900
34,0	39,73	29,20	3 600
36,0	35,25	26,62	3 300
38,0	30,20	23,56	3 000
40,0	24,21	19,78	2 700
41,0	20,50	17,11	2 600
45,7 m Boom			
7,9	81,70	46,96	23 800 *
8,0	80,48	46,95	23 800 *
9,0	79,20	46,78	23 200
10,0	76,62	46,60	20 900
12,0	74,01	46,15	16 200
14,0	71,36	45,61	13 100
16,0	68,68	44,97	10 900
18,0	65,94	44,23	9 200
20,0	63,13	43,38	7 900
22,0	60,26	42,53	6 900
24,0	57,30	41,45	6 100
26,0	54,24	40,24	5 400
28,0	51,05	38,88	4 800
30,0	47,71	37,36	4 300
32,0	44,18	35,65	3 900
34,0	40,41	33,73	3 500
36,0	36,32	31,55	3 200
38,0	31,77	29,05	2 900
40,0	26,54	26,13	2 600
42,6	24,80	21,27	2 400

Load Radius (m)	Boom Angle (deg)	Boom Point Elev. (m)	360° Rated Load (kg)
48,8 m Boom			
8,5	81,50	49,95	19 900 *
9,0	81,09	49,87	19 700 *
10,0	79,89	49,70	19 200 *
12,0	77,48	49,28	16 200
14,0	75,04	48,78	13 100
16,0	72,58	48,19	10 900
18,0	70,08	47,50	9 200
20,0	67,54	46,71	7 900
22,0	64,95	45,92	6 900
24,0	62,30	44,93	6 000
26,0	59,59	43,82	5 300
28,0	56,80	42,58	4 700
30,0	53,92	41,20	4 200
32,0	50,92	39,66	3 800
34,0	47,79	37,95	3 400
36,0	44,50	36,04	3 100
38,0	41,00	33,90	2 800
40,0	37,22	31,46	2 600
44,0	28,42	25,36	2 100
45,7	24,00	21,94	1 900
51,8 m Boom			
8,5	82,00	53,03	17 500 *
9,0	81,62	52,96	17 300 *
10,0	80,49	52,80	16 900 *
12,0	78,23	52,41	15 900 *
14,0	75,95	51,93	13 000
16,0	73,64	51,38	10 800
18,0	71,30	50,73	9 100
20,0	68,93	50,00	7 800
22,0	66,53	49,26	6 800
24,0	64,07	48,34	5 900
26,0	61,57	47,31	5 200
28,0	59,00	46,17	4 600
30,0	56,36	44,91	4 100
32,0	53,64	43,51	3 700
34,0	50,81	41,97	3 300
36,0	47,87	40,25	3 000
38,0	44,78	38,35	2 700
40,0	41,51	36,23	2 400
44,0	34,21	31,14	2 000
48,0	25,13	24,25	1 600
48,7	23,30	22,61	1 500



Liftcrane Boom Capacities

26 100 kg Crane Counterweight
6 500 kg Carbody Counterweight
Extended Position Crawlers
360 Degree Rating

Meets
ASME B30.5
Requirements

8500-1

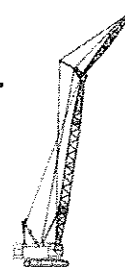
Load Radius (m)	Boom Angle (deg)	Boom Point Elev. (m)	360° Rated Load (kg)
54,9 m Boom			
9,1	81,80	56,02	15 200 *
10,0	82,17	55,89	14 900 *
12,0	81,11	55,52	14 100 *
14,0	78,99	55,08	12 900 *
16,0	76,85	54,55	10 700
18,0	74,69	53,95	9 000
20,0	72,51	53,26	7 700
22,0	70,31	52,57	6 700
24,0	68,07	51,71	5 800
26,0	65,80	50,75	5 100
28,0	61,12	49,69	4 500
30,0	58,70	48,52	4 000
32,0	56,21	47,24	3 600
34,0	53,66	45,82	3 200
36,0	51,01	44,27	2 900
38,0	48,26	42,56	2 600
40,0	45,39	40,66	2 300
44,0	39,15	36,23	1 800
48,0	31,92	30,59	1 400
52,0	22,60	23,23	1 100

Load Radius (m)	Boom Angle (deg)	Boom Point Elev. (m)	360° Rated Load (kg)
57,9 m Boom			
10,0	81,60	58,97	13 200 *
12,0	79,58	58,63	12 500 *
14,0	77,56	58,21	11 900 *
16,0	75,52	57,71	10 700
18,0	73,46	57,14	9 000
20,0	71,39	56,49	7 700
22,0	69,28	55,85	6 700
24,0	67,15	55,04	5 800
26,0	64,98	54,14	5 100
28,0	62,77	53,15	4 500
30,0	60,52	52,06	4 000
32,0	58,21	50,87	3 600
34,0	55,85	49,56	3 200
36,0	53,42	48,13	2 900
38,0	50,90	46,57	2 600
40,0	48,30	44,86	2 300
44,0	42,73	40,90	1 800
48,0	36,49	36,03	1 400
51,7	29,10	30,13	1 100

Load Radius (m)	Boom Angle (deg)	Boom Point Elev. (m)	360° Rated Load (kg)
61,0 m Boom			
10,3	81,40	62,00	11 600 *
12,0	80,10	61,73	11 100 *
14,0	78,19	61,33	10 500 *
16,0	76,26	60,86	9 900 *
18,0	74,31	60,32	8 900 *
20,0	72,35	59,78	7 600
22,0	70,36	59,10	6 600
24,0	68,35	58,34	5 700
26,0	66,31	57,49	5 000
28,0	64,24	56,56	4 400
30,0	62,13	55,55	3 900
32,0	59,98	54,43	3 500
34,0	57,78	53,21	3 100
36,0	55,52	51,89	2 800
38,0	53,20	50,44	2 400
40,0	50,81	48,87	2 100
44,0	45,76	45,28	1 700
48,0	40,22	40,96	1 300
49,0	38,70	40,04	1 200

S/N: 8501896

S/N: 8501896



Liftcrane Jib Capacities

26 100 kg Crane Counterweight
6 500 kg Carbody Counterweight
Extended Position Crawlers
360 Degree Rating

Meets
ASME B30.5
Requirements

8500-1

LIFTING CAPACITIES:

- Chart supplements liftcrane boom capacity chart **85-14S9339R01-MBM**. Lifting capacities for various boom lengths, jib lengths and jib operating radii are for freely suspended loads.
- Capacities do not exceed 75% of minimum tipping loads. Capacities based on factors other than machine stability such as structural competence are shown by asterisk * in the charts.
- The total load that can be lifted over a jib is limited by the rated jib loads.
- Attempting to lift more than rated loads may cause machine to tip or collapse. Do not tip machine to determine capacity.
- Do not attempt to lift where no radius on load chart is listed as crane may tip or collapse.
- Weight of hooks, hook blocks, slings and other lifting devices beneath boom and jib point sheaves are part of the total load. Their total weight must be subtracted from the rated load to obtain the weight that can be lifted.
- Load radius is horizontal distance from axis of rotation to center of gravity of the freely suspended load. Boom angle is angle between horizontal and centerline of boom butt and inserts, and is an indication of radius. In all cases, operating radius shall govern capacity.
- Least stable position is over the side.
- Jib point elevation is vertical distance from ground level to centerline of jib point shaft.
- Lifting capacities listed apply only to the machine as originally manufactured and designed. Modifications to this machine or use of equipment other than that specified can reduce operating capacity.
- Machine travel with load (pick and carry).
 - Travel with crane upperworks in-line with crawlers. Grade in any direction must not exceed 1 percent (0.5 degrees).
 - Travel surface must be firm, level and uniformly supporting. Capacity charts are based on static conditions; therefore judgment must be used to allow for dynamic effects of traveling with load. Carry load as close to ground as possible. Stabilize load with taglines. Travel slowly and smoothly to avoid shock loading boom, jib and rigging.

OPERATING CONDITION:

- The machine must be reeved and set-up as stated in the Operator Manual. If this manual is missing, obtain replacement.
 - Boom backstops are required for all boom lengths.
 - Gantry must be fully raised position for all operation.
 - Crawlers must be fully extended and be locked in position.
 - The crane must be leveled to within 1% on a firm supporting surface.
 - Refer to operator manual for operating guidelines.

Maximum Boom and Jib Lengths Lifted Unassisted			
Over End of Blocked Crawlers		Over End of Crawlers	
Boom Length	Jib Length	Boom Length	Jib Length
61,0 m (a)	—	61,0 m (a)	—
57,9 m	—	57,9 m	—
54,9 m	18,3 m	51,8 m	18,3 m

Load block, hook and weight ball on ground at start.
(a) Upper boom point cannot be attached on 61,0 m boom.
Jibs can only be mounted on 24,4 m to 54,9 m booms.

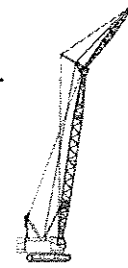
- See Operator Manual Section 6 for Wire Rope Specifications.
- Machine equipped with 6 280 mm crawlers, 900 mm treads, 12 parts of boom hoist reeving, 26 100 kg crane counterweight and 6 500 kg carbody counterweight
- Upper boom point must be removed when jib is attached.

Hoist Reeving for Jib Loads

No. of Parts of Line	1	2
Maximum Loads (kg)	7 700	10 800

Operation of this equipment in excess of rated loads or disregard of instruction voids the warranty.

S/N: 8501896



Liftcrane Jib Capacities

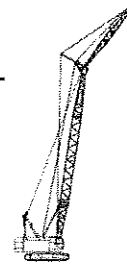
26 100 kg Crane Counterweight
6 500 kg Carbody Counterweight
Extended Position Crawlers
360 Degree Rating

Meets
ASME B30.5
Requirements

8500-1

9,1 m Jib

Load Radius (m)	10 Degree Offset			30 Degree Offset			Load Radius (m)
	Boom Angle (deg)	Jib Point Elev. (m)	Rated Load (kg)	Boom Angle (deg)	Jib Point Elev. (m)	Rated Load (kg)	
24,4 m Boom							
9	79,3	34,6	10 800 *				9
10	77,4	34,3	10 800 *				10
12	73,9	33,7	10 800 *	78,7	32,8	9 000 *	12
14	70,2	32,9	10 800 *	74,9	32,1	8 300 *	14
16	66,5	32,0	10 800 *	71,1	31,1	7 700 *	16
18	62,6	31,0	9 800	67,1	30,0	7 300 *	18
20	58,6	29,7	8 600	63,0	28,7	6 900 *	20
22	54,4	28,2	7 500	58,6	27,2	6 500 *	22
24	50,0	26,5	6 700	53,9	25,4	6 200 *	24
26	45,1	24,5	6 000				26
28	39,8	22,1	5 400				28
30	33,8	19,2	4 900				30
32	32,4	15,3	4 800				32
27,4 m Boom							
10	78,5	37,4	10 800 *				10
12	75,2	36,9	10 800 *				12
14	71,9	36,2	10 800 *	76,3	35,3	8 500 *	14
16	68,6	35,4	10 800 *	72,8	34,5	8 000 *	16
18	65,1	34,4	9 800	69,3	33,5	7 500 *	18
20	61,6	33,3	8 500	65,6	32,3	7 100 *	20
22	57,9	32,0	7 400	61,8	31,0	6 700 *	22
24	54,0	30,5	6 600	57,8	29,5	6 400 *	24
26	49,9	28,8	5 900	53,9	27,9	6 000 *	26
28	45,5	26,8	5 300				28
30	40,7	24,5	4 800				30
32	35,6	21,7	4 300				32
30,5 m Boom							
10	79,4	40,6	10 800 *				10
12	76,4	40,1	10 800 *				12
14	73,4	39,4	10 800 *	77,4	38,5	8 700 *	14
16	70,3	38,7	10 700 *	74,3	37,8	8 200 *	16
18	67,2	37,8	9 600	71,0	36,9	7 700 *	18
20	64,0	36,8	8 300	67,7	35,9	7 300 *	20
22	60,6	35,7	7 300	64,3	34,7	6 900 *	22
24	57,2	34,3	6 400	60,8	33,3	6 500 *	24
26	53,6	32,8	5 700	57,0	31,8	5 900	26
28	49,8	31,1	5 100	53,1	30,0	5 200	28
30	45,8	29,2	4 600				30
32	41,4	26,9	4 200				32
34	36,6	24,2	3 800				34
36	34,0	21,0	3 600				36



Liftcrane Jib Capacities

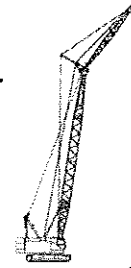
Meets
ASME B30.5
Requirements

26 100 kg Crane Counterweight
6 500 kg Carbody Counterweight
Extended Position Crawlers
360 Degree Rating

8500-1

9,1 m Jib

Load Radius (m)	10 Degree Offset			30 Degree Offset			Load Radius (m)
	Boom Angle (deg)	Jib Point Elev. (m)	Rated Load (kg)	Boom Angle (deg)	Jib Point Elev. (m)	Rated Load (kg)	
33,5 m Boom							
10	79,8	43,7	10 800 *				10
12	77,4	43,2	10 800 *				12
14	74,6	42,6	10 800 *	78,4	41,7	8 900 *	14
16	71,8	42,0	10 700 *	75,5	41,0	8 300 *	16
18	68,9	41,2	9 600 *	72,5	40,2	7 900 *	18
20	66,0	40,2	8 300	69,5	39,3	7 500 *	20
22	63,0	39,2	7 200	66,4	38,2	7 100 *	22
24	59,8	38,0	6 400	63,2	37,0	6 500 *	24
26	56,6	36,7	5 700	59,9	35,6	5 800	26
28	53,3	35,1	5 100	56,4	34,0	5 200	28
30	49,8	33,4	4 600	52,0	31,9	4 500	30
32	46,0	31,5	4 100				32
34	42,0	29,3	3 800				34
36	37,6	26,7	3 400				36
38	32,7	19,8	3 100				38
36,6 m Boom							
12	78,3	46,4	10 800 *				12
14	75,7	45,8	10 800 *	79,2	44,9	9 000 *	14
16	73,1	45,2	10 600 *	76,5	44,3	8 500 *	16
18	70,4	44,5	9 500	73,8	43,5	8 100 *	18
20	67,7	43,6	8 200	71,0	42,6	7 700 *	20
22	64,9	42,6	7 100	68,2	41,7	7 200 *	22
24	62,1	41,6	6 300	65,3	40,5	6 400	24
26	59,2	40,3	5 600	62,3	39,3	5 700	26
28	56,1	39,0	5 000	59,2	37,9	5 100	28
30	53,0	37,4	4 400	55,9	36,3	4 600	30
32	49,7	35,7	4 000	52,6	34,5	4 100	32
34	46,2	33,8	3 600				34
36	42,5	31,6	3 300				36
38	38,5	29,1	3 000				38
40	34,1	26,2	2 700				40
42	31,7	22,6	2 600				42



Liftcrane Jib Capacities

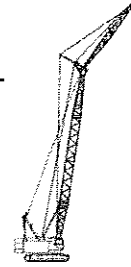
26 100 kg Crane Counterweight
6 500 kg Carbody Counterweight
Extended Position Crawlers
360 Degree Rating

Meets
ASME B30.5
Requirements

8500-1

9,1 m Jib

Load Radius (m)	10 Degree Offset			30 Degree Offset			Load Radius (m)
	Boom Angle (deg)	Jib Point Elev. (m)	Rated Load (kg)	Boom Angle (deg)	Jib Point Elev. (m)	Rated Load (kg)	
39,6 m Boom							
12	79,0	49,5	10 800 *				12
14	76,6	49,0	10 800 *				14
16	74,1	48,4	10 600 *	77,4	47,5	8 700 *	16
18	71,7	47,7	9 400	74,9	46,8	8 200 *	18
20	69,2	46,9	8 100	72,3	46,0	7 800 *	20
22	66,6	46,0	7 000	69,7	45,1	7 300	22
24	64,0	45,0	6 200	67,0	44,0	6 400	24
26	61,3	43,9	5 500	64,3	42,9	5 600	26
28	58,5	42,7	4 900	61,5	41,6	5 000	28
30	55,7	41,3	4 300	58,5	40,2	4 500	30
32	52,7	39,7	3 900	55,5	38,6	4 000	32
34	49,7	38,0	3 500	53,2	37,3	3 700	34
36	46,4	36,1	3 200				36
38	43,0	34,0	2 900				38
40	39,3	31,5	2 600				40
42	35,2	28,7	2 400				42
44	33,9	25,4	2 300				44
42,7 m Boom							
12	79,6	52,6	10 800 *				12
14	77,4	52,1	10 800 *				14
16	75,1	51,6	10 500 *	78,2	50,6	8 800 *	16
18	72,8	50,9	9 300	75,8	50,0	8 400 *	18
20	70,4	50,2	8 000	73,4	49,2	7 900 *	20
22	68,1	49,4	6 900	71,0	48,4	7 200	22
24	65,6	48,5	6 100	68,5	47,4	6 300	24
26	63,2	47,4	5 400	66,0	46,4	5 500	26
28	60,6	46,3	4 800	63,4	45,2	4 900	28
30	58,0	45,0	4 200	60,7	43,9	4 400	30
32	55,3	43,6	3 800	58,0	42,5	3 900	32
34	52,5	42,0	3 400	55,1	40,9	3 500	34
36	49,6	40,3	3 100	52,1	39,1	3 200	36
38	46,6	38,4	2 800				38
40	43,4	36,3	2 500				40
42	39,9	33,9	2 300				42
44	36,2	31,2	2 000				44
46	32,9	28,0	1 900				46



Liftcrane Jib Capacities

26 100 kg Crane Counterweight
6 500 kg Carbody Counterweight
Extended Position Crawlers
360 Degree Rating

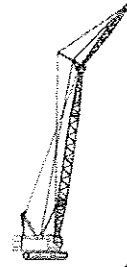
Meets
ASME B30.5
Requirements

8500-1

9,1 m Jib

Load Radius (m)	10 Degree Offset			30 Degree Offset			Load Radius (m)
	Boom Angle (deg)	Jib Point Elev. (m)	Rated Load (kg)	Boom Angle (deg)	Jib Point Elev. (m)	Rated Load (kg)	
45,7 m Boom							
14	78,1	55,3	10 800 *				14
16	76,0	54,8	10 500 *	78,9	53,8	8 900 *	16
18	73,8	54,2	9 200	76,7	53,2	8 500 *	18
20	71,6	53,5	7 900	74,4	52,5	8 100 *	20
22	69,3	52,7	6 900	72,1	51,7	7 100	22
24	67,1	51,8	6 000	69,8	50,8	6 200	24
26	64,8	50,9	5 300	67,5	49,8	5 500	26
28	62,4	49,8	4 700	65,1	48,7	4 900	28
30	60,0	48,6	4 200	62,6	47,5	4 300	30
32	57,5	47,3	3 700	60,1	46,2	3 800	32
34	55,0	45,9	3 300	57,4	44,8	3 400	34
36	52,3	44,3	3 000	54,7	43,2	3 100	36
38	49,6	42,6	2 700	51,8	41,4	2 800	38
40	46,7	40,7	2 400				40
42	43,7	38,6	2 200				42
44	40,5	36,3	1 900				44
46	37,0	33,6	1 700				46
48	33,3	30,6	1 500				48
50	31,8	27,1	1 400				50
48,8 m Boom							
14	78,7	58,4	10 800 *				14
16	76,7	57,9	10 500 *				16
18	74,7	57,4	9 100	77,4	56,4	8 600 *	18
20	72,6	56,7	7 800	75,3	55,7	8 100	20
22	70,5	56,0	6 800	73,2	55,0	7 000	22
24	68,4	55,2	5 900	71,0	54,2	6 100	24
26	66,2	54,3	5 200	68,8	53,2	5 400	26
28	64,0	53,3	4 600	66,5	52,2	4 800	28
30	61,7	52,2	4 100	64,2	51,1	4 200	30
32	59,4	51,0	3 600	61,9	49,9	3 800	32
34	57,1	49,7	3 200	59,5	48,5	3 400	34
36	54,7	48,2	2 900	57,0	47,1	3 000	36
38	52,1	46,6	2 600	54,4	45,4	2 700	38
40	49,5	44,9	2 300	52,4	44,1	2 500	40
42	46,8	43,0	2 000				42
44	44,0	41,0	1 800				44
46	41,0	38,6	1 600				46
48	37,8	36,1	1 400				48
50	34,3	33,2	1 200				50
52	33,9	29,8	1 100				52

S/N: 8501896



Liftcrane Jib Capacities

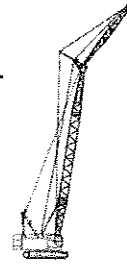
26 100 kg Crane Counterweight
6 500 kg Carbody Counterweight
Extended Position Crawlers
360 Degree Rating

Meets
ASME B30.5
Requirements

8500-1

9,1 m Jib

Load Radius (m)	10 Degree Offset			30 Degree Offset			Load Radius (m)
	Boom Angle (deg)	Jib Point Elev. (m)	Rated Load (kg)	Boom Angle (deg)	Jib Point Elev. (m)	Rated Load (kg)	
51,8 m Boom							
14	79,3	61,5	10 500 *				14
16	77,4	61,1	10 200 *				16
18	75,4	60,5	9 000	78,1	59,6	8 700 *	18
20	73,5	59,9	7 700	76,1	58,9	8 100	20
22	71,5	59,2	6 700	74,0	58,2	7 000	22
24	69,5	58,5	5 800	72,0	57,5	6 000	24
26	67,5	57,6	5 100	69,9	56,6	5 300	26
28	65,4	56,7	4 500	67,8	55,6	4 700	28
30	63,3	55,7	4 000	65,7	54,6	4 100	30
32	61,1	54,5	3 500	63,5	53,4	3 700	32
34	58,9	53,3	3 100	61,2	52,2	3 300	34
36	56,7	52,0	2 800	58,9	50,8	2 900	36
38	54,4	50,5	2 500	56,6	49,4	2 600	38
40	52,0	48,9	2 200	54,1	47,7	2 300	40
42	49,5	47,2	1 900	52,8	46,8	2 100	42
44	46,9	45,3	1 600				44
46	44,3	43,3	1 400				46
48	41,4	41,0	1 200				48
50	40,4	38,5	1 100				50
54,9 m Boom							
16	78,0	64,2	8 800 *				16
18	76,2	63,7	8 500 *	78,7	62,7	8 400 *	18
20	74,3	63,1	7 600	76,8	62,1	8 000	20
22	72,4	62,5	6 600	74,9	61,5	6 900	22
24	70,5	61,7	5 700	72,9	60,7	6 000	24
26	68,6	60,9	5 000	71,0	59,9	5 200	26
28	66,6	60,1	4 400	69,0	59,0	4 600	28
30	64,7	59,1	3 900	67,0	58,0	4 100	30
32	62,7	58,0	3 400	64,9	57,0	3 600	32
34	60,6	56,9	3 000	62,8	55,8	3 200	34
36	58,5	55,6	2 700	60,7	54,5	2 800	36
38	56,3	54,3	2 400	58,5	53,1	2 500	38
40	54,1	52,8	2 100	56,2	51,6	2 200	40
42	51,8	51,2	1 800	53,9	50,0	1 900	42
44	49,5	49,5	1 500	51,5	48,3	1 600	44
46	47,0	47,6	1 300				46
48	45,7	46,5	1 100				48



Liftcrane Jib Capacities

26 100 kg Crane Counterweight
6 500 kg Carbody Counterweight
Extended Position Crawlers
360 Degree Rating

Meets
ASME B30.5
Requirements

8500-1

12,2 m Jib

Load Radius (m)	10 Degree Offset			30 Degree Offset			Load Radius (m)
	Boom Angle (deg)	Jib Point Elev. (m)	Rated Load (kg)	Boom Angle (deg)	Jib Point Elev. (m)	Rated Load (kg)	
24,4 m Boom							
10	79,3	37,4	10 800 *				10
12	76,1	36,9	10 800 *				12
14	72,8	36,2	10 700 *	78,7	35,1	6 800 *	14
16	69,4	35,4	9 600 *	75,2	34,3	6 300 *	16
18	65,9	34,4	8 600 *	71,6	33,3	5 900 *	18
20	62,4	33,3	7 800 *	67,9	32,1	5 500 *	20
22	58,7	32,0	7 200 *	64,1	30,8	5 200 *	22
24	54,8	30,5	6 600 *	60,0	29,2	5 000 *	24
26	50,7	28,8	6 000 *	55,7	27,5	4 700 *	26
28	46,3	26,8	5 400 *	52,9	26,1	4 600 *	28
30	41,5	24,5	4 900 *				30
32	36,7	21,7	4 500 *				32
27,4 m Boom							
10	79,3	40,6	10 800 *				10
12	77,2	40,0	10 800 *				12
14	74,1	39,4	10 800 *				14
16	71,1	38,7	10 100 *	76,5	37,6	6 500 *	16
18	67,9	37,8	9 100 *	73,2	36,7	6 100 *	18
20	64,7	36,8	8 300 *	69,9	35,6	5 700 *	20
22	61,4	35,6	7 500 *	66,4	34,4	5 400 *	22
24	57,9	34,3	6 600 *	62,9	33,1	5 100 *	24
26	54,3	32,8	5 900 *	59,1	31,5	4 900 *	26
28	50,5	31,1	5 300 *	55,1	29,7	4 700 *	28
30	46,5	29,1	4 800 *	53,4	28,8	4 600 *	30
32	42,1	26,9	4 400 *				32
34	37,3	24,2	4 000 *				34
36	35,0	20,9	3 800 *				36



Liftcrane Jib Capacities

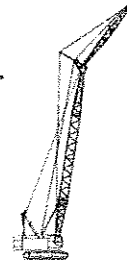
26 100 kg Crane Counterweight
6 500 kg Carbody Counterweight
Extended Position Crawlers
360 Degree Rating

Meets
ASME B30.5
Requirements

8500-1

12,2 m Jib

Load Radius (m)	10 Degree Offset			30 Degree Offset			Load Radius (m)
	Boom Angle (deg)	Jib Point Elev. (m)	Rated Load (kg)	Boom Angle (deg)	Jib Point Elev. (m)	Rated Load (kg)	
30,5 m Boom							
10	80,0	43,7	10 800 *				10
12	78,1	43,2	10 800 *				12
14	75,3	42,6	10 800 *				14
16	72,5	41,9	10 500 *	77,5	40,8	6 600 *	16
18	69,6	41,1	9 600 *	74,5	40,0	6 200 *	18
20	66,7	40,2	8 400	71,5	39,0	5 900 *	20
22	63,6	39,2	7 400	68,4	38,0	5 500 *	22
24	60,5	38,0	6 500	65,2	36,7	5 300 *	24
26	57,3	36,6	5 800	61,8	35,3	5 000 *	26
28	54,0	35,1	5 200	58,3	33,8	4 800 *	28
30	50,4	33,4	4 700	54,7	32,0	4 700 *	30
32	46,7	31,5	4 300				32
34	42,7	29,2	3 900				34
36	38,3	26,6	3 500				36
38	33,4	23,6	3 200				38
40	33,7	19,7	3 200				40
33,5 m Boom							
10	79,9	46,8	10 800 *				10
12	78,9	46,3	10 800 *				12
14	76,3	45,8	10 800 *				14
16	73,7	45,2	10 700 *	78,4	44,0	6 700 *	16
18	71,0	44,4	9 700	75,7	43,3	6 300 *	18
20	68,3	43,6	8 400	72,9	42,4	6 000 *	20
22	65,6	42,6	7 300	70,0	41,4	5 700 *	22
24	62,7	41,5	6 500	67,1	40,3	5 400 *	24
26	59,8	40,3	5 700	64,1	39,0	5 200 *	26
28	56,8	38,9	5 100	60,9	37,6	5 000 *	28
30	53,6	37,4	4 600	57,7	36,0	4 800 *	30
32	50,3	35,7	4 200	54,2	34,2	4 400	32
34	46,9	33,8	3 800	51,8	32,8	4 000	34
36	43,2	31,6	3 400				36
38	39,1	29,1	3 200				38
40	34,7	26,1	2 900				40
42	32,5	22,6	2 800				42



Liftcrane Jib Capacities

26 100 kg Crane Counterweight
6 500 kg Carbody Counterweight
Extended Position Crawlers
360 Degree Rating

Meets
ASME B30.5
Requirements

8500-1

12,2 m Jib

Load Radius (m)	10 Degree Offset			30 Degree Offset			Load Radius (m)
	Boom Angle (deg)	Jib Point Elev. (m)	Rated Load (kg)	Boom Angle (deg)	Jib Point Elev. (m)	Rated Load (kg)	
36,6 m Boom							
12	79,9	49,5	10 800 *				12
14	77,2	49,0	10 800 *				14
16	74,8	48,4	10 700 *	78,5	47,0	6 700 *	16
18	72,3	47,7	9 600	76,6	46,5	6 500 *	18
20	69,8	46,9	8 300	74,1	45,7	6 100 *	20
22	67,2	46,0	7 200	71,4	44,8	5 800 *	22
24	64,6	45,0	6 300	68,7	43,8	5 600 *	24
26	61,9	43,9	5 600	66,0	42,6	5 300 *	26
28	59,1	42,6	5 000	63,1	41,3	5 100 *	28
30	56,3	41,3	4 500	60,2	39,9	4 700	30
32	53,3	39,7	4 100	57,1	38,3	4 300	32
34	50,2	38,0	3 700	53,9	36,5	3 900	34
36	47,0	36,1	3 300	52,3	35,5	3 600	36
38	43,6	33,9	3 000				38
40	39,9	31,5	2 800				40
42	35,8	28,6	2 500				42
44	34,7	25,3	2 500				44
39,6 m Boom							
12	78,8	52,6	10 800 *				12
14	78,0	52,1	10 800 *				14
16	75,7	51,6	10 600 *	79,3	50,2	6 800 *	16
18	73,4	50,9	9 500	77,5	49,7	6 600 *	18
20	71,0	50,2	8 200	75,1	49,0	6 200 *	20
22	68,6	49,4	7 100	72,6	48,1	5 900 *	22
24	66,2	48,4	6 200	70,1	47,2	5 700 *	24
26	63,7	47,4	5 500	67,6	46,1	5 400 *	26
28	61,2	46,2	4 900	65,0	44,9	5 200 *	28
30	58,6	45,0	4 400	62,3	43,6	4 600	30
32	55,9	43,6	4 000	59,5	42,2	4 200	32
34	53,1	42,0	3 600	56,6	40,5	3 800	34
36	50,2	40,3	3 200	53,6	38,8	3 400	36
38	47,1	38,4	2 900				38
40	43,9	36,2	2 700				40
42	40,5	33,9	2 400				42
44	36,7	31,1	2 200				44
46	33,7	28,0	2 000				46



Liftcrane Jib Capacities

26 100 kg Crane Counterweight
6 500 kg Carbody Counterweight
Extended Position Crawlers
360 Degree Rating

Meets
ASME B30.5
Requirements

8500-1

12,2 m Jib

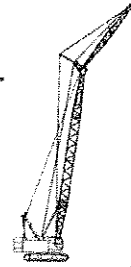
Load Radius (m)	10 Degree Offset			30 Degree Offset			Load Radius (m)
	Boom Angle (deg)	Jib Point Elev. (m)	Rated Load (kg)	Boom Angle (deg)	Jib Point Elev. (m)	Rated Load (kg)	
42,7 m Boom							
12	79,4	55,7	10 800 *				12
14	78,6	55,3	10 800 *				14
16	76,5	54,7	10 600 *	79,9	53,4	6 900 *	16
18	74,3	54,1	9 400	78,2	52,9	6 700 *	18
20	72,1	53,4	8 100	76,0	52,2	6 400 *	20
22	69,9	52,7	7 000	73,7	51,4	6 100 *	22
24	67,6	51,8	6 200	71,4	50,5	5 800 *	24
26	65,3	50,8	5 400	69,0	49,5	5 500 *	26
28	62,9	49,8	4 800	66,6	48,5	5 100	28
30	60,5	48,6	4 300	64,1	47,2	4 600	30
32	58,1	47,3	3 900	61,5	45,9	4 100	32
34	55,5	45,9	3 500	58,9	44,4	3 700	34
36	52,9	44,3	3 100	56,2	42,8	3 300	36
38	50,1	42,6	2 800	53,4	41,0	3 000	38
40	47,2	40,7	2 600				40
42	44,2	38,6	2 300				42
44	41,0	36,2	2 100				44
46	37,5	33,6	1 900				46
48	33,8	30,6	1 700				48
50	32,5	27,0	1 600				50
45,7 m Boom							
14	79,3	58,4	10 800 *				14
16	77,2	57,9	10 600 *				16
18	75,2	57,3	9 300	78,9	56,1	6 700 *	18
20	73,1	56,7	8 000	76,8	55,4	6 500 *	20
22	71,0	55,9	7 000	74,6	54,7	6 200 *	22
24	68,9	55,1	6 100	72,4	53,9	5 900 *	24
26	66,7	54,2	5 400	70,2	52,9	5 700 *	26
28	64,5	53,2	4 800	67,9	51,9	5 100	28
30	62,3	52,1	4 200	65,6	50,8	4 500	30
32	59,9	50,9	3 800	63,3	49,6	4 000	32
34	57,6	49,6	3 400	60,8	48,2	3 600	34
36	55,2	48,2	3 000	58,3	46,7	3 300	36
38	52,6	46,6	2 700	55,7	45,1	2 900	38
40	50,0	44,9	2 500	53,8	43,7	2 700	40
42	47,3	43,0	2 200				42
44	44,5	40,9	2 000				44
46	41,5	38,6	1 800				46
48	38,2	36,0	1 500				48
50	34,6	29,7	1 300				50



Liftcrane Jib Capacities

26 100 kg Crane Counterweight
6 500 kg Carbody Counterweight
Extended Position Crawlers
360 Degree Rating

Meets
ASME B30.5
Requirements

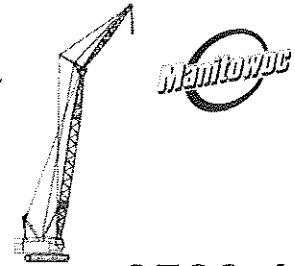


8500-1

12,2 m Jib

Load Radius (m)	10 Degree Offset			30 Degree Offset			Load Radius (m)
	Boom Angle (deg)	Jib Point Elev. (m)	Rated Load (kg)	Boom Angle (deg)	Jib Point Elev. (m)	Rated Load (kg)	
48,8 m Boom							
14	79,0	61,5	10 300 *				14
16	77,9	61,0	10 100 *				16
18	75,9	60,5	9 200 *	79,5	59,2	6 800 *	18
20	74,0	59,9	7 900	77,5	58,7	6 500 *	20
22	72,0	59,2	6 900	75,4	57,9	6 300 *	22
24	70,0	58,4	6 000	73,4	57,2	6 000 *	24
26	67,9	57,6	5 300	71,3	56,3	5 600	26
28	65,9	56,6	4 700	69,2	55,3	5 000	28
30	63,8	55,6	4 100	67,0	54,3	4 500	30
32	61,6	54,5	3 700	64,8	53,1	4 000	32
34	59,4	53,3	3 300	62,6	51,9	3 600	34
36	57,2	51,9	2 900	60,2	50,5	3 200	36
38	54,9	50,5	2 600	57,9	49,0	2 900	38
40	52,5	48,9	2 400	55,4	47,4	2 600	40
42	50,0	47,2	2 100	52,8	45,6	2 200	42
44	47,4	45,3	1 900				44
46	44,7	43,2	1 600				46
48	41,9	41,0	1 400				48
50	38,9	38,4	1 200				50
52	38,8	35,6	1 200				52
51,8 m Boom							
14	79,6	64,6	9 400 *				14
16	78,5	64,2	9 200 *				16
18	76,6	63,7	8 700 *	80,0	62,4	6 900 *	18
20	74,8	63,1	7 800	78,1	61,8	6 600 *	20
22	72,9	62,4	6 800	76,2	61,2	6 300 *	22
24	71,0	61,7	5 900	74,2	60,4	6 100 *	24
26	69,1	60,9	5 200	72,3	59,6	5 600	26
28	67,1	60,0	4 600	70,3	58,7	4 900	28
30	65,1	59,1	4 000	68,2	57,7	4 400	30
32	63,1	58,0	3 600	66,2	56,6	3 900	32
34	61,1	56,9	3 200	64,1	55,5	3 500	34
36	58,9	55,6	2 800	61,9	54,2	3 100	36
38	56,8	54,3	2 500	59,7	52,8	2 800	38
40	54,6	52,8	2 300	57,4	51,3	2 500	40
42	52,3	51,2	2 000	55,1	49,7	2 200	42
44	49,9	49,5	1 700	52,6	47,9	1 900	44
46	47,5	47,6	1 500				46
48	44,9	45,6	1 300				48
50	44,2	43,3	1 200				50

S/N: 8501896



Liftcrane Jib Capacities

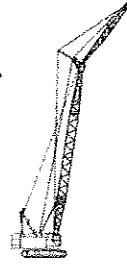
26 100 kg Crane Counterweight
 6 500 kg Carbody Counterweight
 Extended Position Crawlers
 360 Degree Rating

Meets
 ASME B30.5
 Requirements

8500-1

12,2 m Jib

Load Radius (m)	10 Degree Offset			30 Degree Offset			Load Radius (m)
	Boom Angle (deg)	Jib Point Elev. (m)	Rated Load (kg)	Boom Angle (deg)	Jib Point Elev. (m)	Rated Load (kg)	
54,9 m Boom							
16	78,7	67,2	8 300 *				16
18	77,2	66,8	8 100 *				18
20	75,5	66,3	7 600 *	78,7	65,0	6 600 *	20
22	73,7	65,6	6 700	76,8	64,4	6 400 *	22
24	71,9	65,0	5 800	75,0	63,7	6 200 *	24
26	70,1	64,2	5 100	73,1	62,9	5 500	26
28	68,2	63,4	4 500	71,3	62,0	4 900	28
30	66,3	62,4	4 000	69,3	61,1	4 300	30
32	64,4	61,5	3 500	67,4	60,1	3 800	32
34	62,5	60,4	3 100	65,4	59,0	3 400	34
36	60,5	59,2	2 800	63,4	57,8	3 000	36
38	58,5	57,9	2 400	61,3	56,5	2 700	38
40	56,4	56,6	2 100	59,2	55,1	2 400	40
42	54,3	55,1	1 800	57,0	53,6	2 100	42
44	52,1	53,5	1 600	54,8	51,9	1 800	44
46	49,9	51,8	1 300	53,0	50,5	1 600	46
48	48,8	50,7	1 200				48



Liftcrane Jib Capacities

26 100 kg Crane Counterweight
6 500 kg Carbody Counterweight
Extended Position Crawlers
360 Degree Rating

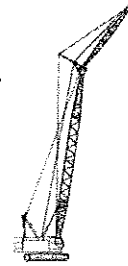
Meets
ASME B30.5
Requirements

8500-1

15,2 m Jib

Load Radius (m)	10 Degree Offset			30 Degree Offset			Load Radius (m)
	Boom Angle (deg)	Jib Point Elev. (m)	Rated Load (kg)	Boom Angle (deg)	Jib Point Elev. (m)	Rated Load (kg)	
24,4 m Boom							
10	79,3	40,5	9 000 *				10
12	77,9	40,0	9 000 *				12
14	74,9	39,4	8 900 *				14
16	71,8	38,7	8 000 *	78,0	37,1	5 000 *	16
18	68,7	37,8	7 200 *	75,4	36,5	4 800 *	18
20	65,5	36,8	6 500 *	72,1	35,5	4 500 *	20
22	62,1	35,6	6 000 *	68,6	34,3	4 200 *	22
24	58,7	34,3	5 500 *	65,0	32,9	4 000 *	24
26	55,1	32,8	5 100 *	61,3	31,3	3 800 *	26
28	51,3	31,1	4 800 *	57,3	29,5	3 600 *	28
30	47,3	29,1	4 500 *	53,0	27,4	3 400 *	30
32	42,9	26,8	4 200 *				32
34	38,1	24,1	4 000 *				34
36	35,8	20,9	3 900 *				36
27,4 m Boom							
10	80,0	43,7	9 000 *				10
12	78,8	43,2	9 000 *				12
14	76,0	42,6	9 000 *				14
16	73,2	41,9	8 400 *	78,9	40,4	5 100 *	16
18	70,3	41,1	7 500 *	76,6	39,8	4 900 *	18
20	67,4	40,2	6 900 *	73,6	38,9	4 600 *	20
22	64,3	39,1	6 300 *	70,4	37,8	4 300 *	22
24	61,2	38,0	5 800 *	67,2	36,5	4 100 *	24
26	58,0	36,6	5 400 *	63,8	35,1	3 900 *	26
28	54,6	35,1	5 000 *	60,3	33,6	3 700 *	28
30	51,1	33,4	4 700 *	56,6	31,7	3 600 *	30
32	47,4	31,4	4 400 *	53,1	29,7	3 400 *	32
34	43,4	29,2	4 000				34
36	39,0	26,6	3 700				36
38	34,4	19,7	3 400				38

S/N: 8501896



Liftcrane Jib Capacities

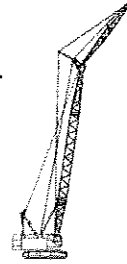
26 100 kg Crane Counterweight
6 500 kg Carbody Counterweight
Extended Position Crawlers
360 Degree Rating

Meets
ASME B30.5
Requirements

8500-1

15,2 m Jib

Load Radius (m)	10 Degree Offset			30 Degree Offset			Load Radius (m)
	Boom Angle (deg)	Jib Point Elev. (m)	Rated Load (kg)	Boom Angle (deg)	Jib Point Elev. (m)	Rated Load (kg)	
30,5 m Boom							
12	79,9	46,3	9 000 *				12
14	77,0	45,8	9 000 *				14
16	74,4	45,1	8 700 *	79,7	43,6	5 200 *	16
18	71,7	44,4	7 900 *	77,6	43,1	5 000 *	18
20	69,0	43,6	7 200 *	74,8	42,2	4 700 *	20
22	66,2	42,6	6 600 *	71,9	41,2	4 400 *	22
24	63,4	41,5	6 100 *	69,0	40,1	4 200 *	24
26	60,4	40,3	5 700 *	65,9	38,8	4 000 *	26
28	57,4	38,9	5 300 *	62,8	37,4	3 800 *	28
30	54,3	37,4	4 700 *	59,5	35,8	3 700 *	30
32	51,0	35,7	4 300	56,0	34,0	3 500 *	32
34	47,5	33,7	3 900	53,7	32,5	3 400 *	34
36	43,8	31,5	3 600				36
38	39,8	29,0	3 300				38
40	35,3	26,1	3 000				40
42	33,2	22,5	2 900				42
33,5 m Boom							
12	78,8	49,4	9 000 *				12
14	77,8	48,9	9 000 *				14
16	75,4	48,4	8 900 *				16
18	72,9	47,7	8 200 *	78,5	46,3	5 000 *	18
20	70,4	46,9	7 500 *	75,8	45,5	4 800 *	20
22	67,8	46,0	6 900 *	73,2	44,6	4 500 *	22
24	65,2	45,0	6 400 *	70,5	43,5	4 300 *	24
26	62,5	43,9	5 800	67,7	42,4	4 100 *	26
28	59,7	42,6	5 200	64,8	41,1	3 900 *	28
30	56,9	41,2	4 700	61,9	39,6	3 800 *	30
32	53,9	39,7	4 200	58,8	38,0	3 600 *	32
34	50,8	38,0	3 800	55,5	36,2	3 500 *	34
36	47,6	36,0	3 500	54,0	35,3	3 400 *	36
38	44,1	33,9	3 200				38
40	40,4	31,4	2 900				40
42	36,4	28,6	2 700				42
44	35,4	25,3	2 600				44



Liftcrane Jib Capacities

26 100 kg Crane Counterweight
6 500 kg Carbody Counterweight
Extended Position Crawlers
360 Degree Rating

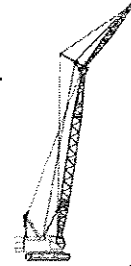
Meets
ASME B30.5
Requirements

8500-1

15,2 m Jib

Load Radius (m)	10 Degree Offset			30 Degree Offset			Load Radius (m)
	Boom Angle (deg)	Jib Point Elev. (m)	Rated Load (kg)	Boom Angle (deg)	Jib Point Elev. (m)	Rated Load (kg)	
36,6 m Boom							
12	79,5	52,6	9 000 *				12
14	78,5	52,1	9 000 *				14
16	76,3	51,5	9 000 *				16
18	73,9	50,9	8 500 *	79,2	49,5	5 100 *	18
20	71,6	50,2	7 800 *	76,7	48,8	4 900 *	20
22	69,2	49,3	7 200 *	74,3	47,9	4 600 *	22
24	66,8	48,4	6 400	71,8	47,0	4 400 *	24
26	64,3	47,4	5 700	69,2	45,9	4 200 *	26
28	61,7	46,2	5 100	66,6	44,7	4 000 *	28
30	59,1	44,9	4 600	63,9	43,4	3 800 *	30
32	56,4	43,5	4 100	61,1	41,9	3 700 *	32
34	53,6	42,0	3 700	58,2	40,3	3 600 *	34
36	50,7	40,3	3 400	55,1	38,5	3 500 *	36
38	47,7	38,3	3 100	52,1	36,4	3 200 *	38
40	44,5	36,2	2 800				40
42	41,0	33,8	2 600				42
44	37,3	31,1	2 300				44
46	34,3	27,9	2 200				46
39,6 m Boom							
12	80,0	55,7	9 000 *				12
14	79,2	55,2	9 000 *				14
16	77,0	54,7	9 000 *				16
18	74,9	54,1	8 800 *	79,9	52,7	5 200 *	18
20	72,7	53,4	8 100 *	77,6	52,0	4 900 *	20
22	70,4	52,6	7 200	75,3	51,2	4 700 *	22
24	68,2	51,8	6 300	72,9	50,3	4 500 *	24
26	65,8	50,8	5 600	70,5	49,3	4 300 *	26
28	63,5	49,7	5 000	68,1	48,2	4 100 *	28
30	61,1	48,6	4 500	65,6	47,0	3 900 *	30
32	58,6	47,3	4 000	63,0	45,7	3 800 *	32
34	56,0	45,8	3 600	60,4	44,2	3 700 *	34
36	53,4	44,3	3 300	57,6	42,5	3 500 *	36
38	50,6	42,6	3 000	54,8	40,7	3 200	38
40	47,8	40,7	2 700	52,6	39,2	2 900	40
42	44,7	38,5	2 500				42
44	41,5	36,2	2 200				44
46	38,1	33,5	2 000				46
48	34,3	30,5	1 900				48
50	33,1	27,0	1 800				50

S/N: 8501896



Liftcrane Jib Capacities

26 100 kg Crane Counterweight
6 500 kg Carbody Counterweight
Extended Position Crawlers
360 Degree Rating

Meets
ASME B30.5
Requirements

8500-1

15,2 m Jib

Load Radius (m)	10 Degree Offset			30 Degree Offset			Load Radius (m)
	Boom Angle (deg)	Jib Point Elev. (m)	Rated Load (kg)	Boom Angle (deg)	Jib Point Elev. (m)	Rated Load (kg)	
42,7 m Boom							
14	79,1	58,4	9 000 *				14
16	77,7	57,9	9 000 *				16
18	75,7	57,3	9 000 *				18
20	73,6	56,6	8 200	78,3	55,2	5 000 *	20
22	71,5	55,9	7 100	76,1	54,5	4 800 *	22
24	69,4	55,1	6 200	73,9	53,6	4 500 *	24
26	67,2	54,2	5 500	71,7	52,7	4 400 *	26
28	65,0	53,2	4 900	69,4	51,7	4 200 *	28
30	62,8	52,1	4 400	67,1	50,5	4 000 *	30
32	60,5	50,9	3 900	64,7	49,3	3 900 *	32
34	58,1	49,6	3 500	62,3	47,9	3 700 *	34
36	55,7	48,2	3 200	59,8	46,4	3 400	36
38	53,2	46,6	2 900	57,2	44,8	3 100	38
40	50,5	44,9	2 600	54,4	43,0	2 800	40
42	47,8	43,0	2 300	53,1	42,0	2 600	42
44	45,0	40,9	2 100				44
46	42,0	38,6	1 900				46
48	38,7	36,0	1 700				48
50	35,2	33,1	1 500				50
52	32,2	29,7	1 300				52
45,7 m Boom							
14	79,6	61,5	9 000 *				14
16	78,4	61,0	9 000 *				16
18	76,4	60,5	9 000 *				18
20	74,5	59,9	8 100	78,9	58,4	5 100 *	20
22	72,5	59,2	7 000	76,8	57,7	4 800 *	22
24	70,5	58,4	6 200	74,8	56,9	4 600 *	24
26	68,4	57,6	5 400	72,7	56,0	4 400 *	26
28	66,4	56,6	4 800	70,6	55,1	4 300 *	28
30	64,3	55,6	4 300	68,4	54,0	4 100 *	30
32	62,1	54,5	3 800	66,2	52,9	3 900 *	32
34	59,9	53,2	3 400	63,9	51,6	3 700	34
36	57,7	51,9	3 100	61,6	50,2	3 400	36
38	55,3	50,5	2 800	59,2	48,7	3 000	38
40	52,9	48,9	2 500	56,7	47,1	2 700	40
42	50,5	47,1	2 300	54,1	45,3	2 500	42
44	47,9	45,3	2 000	53,4	44,7	2 400	44
46	45,2	43,2	1 800				46
48	42,4	40,9	1 600				48
50	39,3	38,4	1 400				50
52	36,1	35,6	1 200				52
53	34,2	33,5	1 100				53



Liftcrane Jib Capacities

26 100 kg Crane Counterweight
6 500 kg Carbody Counterweight
Extended Position Crawlers
360 Degree Rating

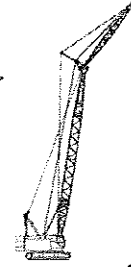
Meets
ASME B30.5
Requirements

8500-1

15,2 m Jib

Load Radius (m)	10 Degree Offset			30 Degree Offset			Load Radius (m)
	Boom Angle (deg)	Jib Point Elev. (m)	Rated Load (kg)	Boom Angle (deg)	Jib Point Elev. (m)	Rated Load (kg)	
48,8 m Boom							
16	78,7	64,1	9 000 *				16
18	77,1	63,6	8 700 *				18
20	75,2	63,1	8 000	79,4	61,6	5 100 *	20
22	73,4	62,4	7 000	77,5	60,9	4 900 *	22
24	71,5	61,7	6 100	75,6	60,2	4 700 *	24
26	69,5	60,9	5 300	73,6	59,3	4 500 *	26
28	67,6	60,0	4 700	71,6	58,4	4 300 *	28
30	65,6	59,0	4 200	69,6	57,4	4 200 *	30
32	63,6	58,0	3 700	67,5	56,4	4 000 *	32
34	61,5	56,8	3 300	65,4	55,2	3 700	34
36	59,4	55,6	3 000	63,2	53,9	3 300	36
38	57,3	54,2	2 700	61,0	52,5	3 000	38
40	55,0	52,8	2 400	58,7	51,0	2 700	40
42	52,8	51,2	2 000	56,3	49,3	2 400	42
44	50,4	49,4	1 900	53,8	47,5	2 200	44
46	47,9	47,6	1 600	51,9	45,9	2 000	46
48	45,4	45,5	1 400				48
50	42,7	43,3	1 200				50
51,8 m Boom							
16	79,2	67,3	8 300 *				16
18	77,7	66,8	8 100 *				18
20	75,9	66,2	7 600 *	79,1	64,4	5 000 *	20
22	74,1	65,6	6 900	78,1	64,1	4 900 *	22
24	72,3	64,9	6 000	76,3	63,4	4 700 *	24
26	70,5	64,2	5 300	74,4	62,6	4 600 *	26
28	68,7	63,3	4 600	72,5	61,8	4 400 *	28
30	66,8	62,4	4 100	70,6	60,8	4 200 *	30
32	64,9	61,4	3 600	68,6	59,8	4 000 *	32
34	62,9	60,3	3 200	66,6	58,7	3 600	34
36	61,0	59,2	2 900	64,6	57,5	3 200	36
38	58,9	57,9	2 600	62,5	56,2	2 900	38
40	56,9	56,5	2 300	60,4	54,8	2 600	40
42	54,8	55,1	2 000	58,2	53,3	2 300	42
44	52,6	53,5	1 800	55,9	51,6	2 100	44
46	50,3	51,7	1 500	53,6	49,8	1 800	46
48	48,0	49,9	1 300	52,4	48,7	1 700	48
50	47,4	47,8	1 200				50

S/N: 8501896



Liftcrane Jib Capacities

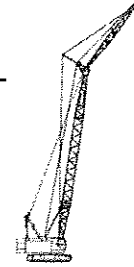
26 100 kg Crane Counterweight
6 500 kg Carbody Counterweight
Extended Position Crawlers
360 Degree Rating

Meets
ASME B30.5
Requirements

8500-1

15,2 m Jib

Load Radius (m)	10 Degree Offset			30 Degree Offset			Load Radius (m)
	Boom Angle (deg)	Jib Point Elev. (m)	Rated Load (kg)	Boom Angle (deg)	Jib Point Elev. (m)	Rated Load (kg)	
54,9 m Boom							
16	79,7	70,4	7 700 *				16
18	78,2	69,9	7 400 *				18
20	76,6	69,4	7 100 *	79,6	67,6	5 100 *	20
22	74,8	68,8	6 600 *	78,7	67,3	5 000 *	22
24	73,1	68,2	5 900 *	76,9	66,6	4 800 *	24
26	71,4	67,4	5 200	75,1	65,9	4 600 *	26
28	69,6	66,6	4 500	73,3	65,1	4 500 *	28
30	67,9	65,8	4 000	71,5	64,2	4 300 *	30
32	66,1	64,8	3 600	69,7	63,2	3 900 *	32
34	64,2	63,8	3 200	67,8	62,2	3 500	34
36	62,4	62,7	2 800	65,9	61,0	3 100	36
38	60,5	61,5	2 500	63,9	59,8	2 800	38
40	58,5	60,2	2 200	61,9	58,5	2 500	40
42	56,5	58,9	1 900	59,9	57,1	2 200	42
44	54,5	57,4	1 600	57,8	55,5	2 000	44
46	52,4	55,8	1 400	55,6	53,9	1 700	46
48	51,5	54,0	1 200	53,4	52,1	1 500	48
50				52,7	51,4	1 400	50



Liftcrane Jib Capacities

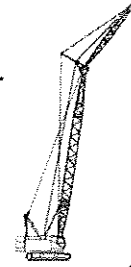
26 100 kg Crane Counterweight
6 500 kg Carbody Counterweight
Extended Position Crawlers
360 Degree Rating

Meets
ASME B30.5
Requirements

8500-1

18,3 m Jib

Load Radius (m)	10 Degree Offset			30 Degree Offset			Load Radius (m)
	Boom Angle (deg)	Jib Point Elev. (m)	Rated Load (kg)	Boom Angle (deg)	Jib Point Elev. (m)	Rated Load (kg)	
24,4 m Boom							
12	79,8	43,2	8 100 *				12
14	76,7	42,6	8 000 *				14
16	73,9	41,9	7 000 *				16
18	71,0	41,1	6 300 *	78,7	39,6	4 000 *	18
20	68,1	40,2	5 700 *	75,7	38,8	3 800 *	20
22	65,0	39,1	5 200 *	72,5	37,7	3 500 *	22
24	61,9	37,9	4 800 *	69,3	36,4	3 300 *	24
26	58,7	36,6	4 400 *	65,9	35,0	3 100 *	26
28	55,3	35,1	4 100 *	62,4	33,4	3 000 *	28
30	51,8	33,4	3 800 *	58,7	31,6	2 800 *	30
32	48,1	31,4	3 600 *	54,7	29,5	2 700 *	32
34	44,1	29,2	3 400 *				34
36	39,7	26,6	3 200 *				36
27,4 m Boom							
14	77,6	45,8	8 000 *				14
16	75,0	45,1	7 300 *				16
18	72,4	44,4	6 600 *	79,5	42,9	4 100 *	18
20	69,6	43,5	6 000 *	76,7	42,1	3 900 *	20
22	66,9	42,6	5 500 *	73,9	41,1	3 600 *	22
24	64,0	41,5	5 000 *	70,9	40,0	3 400 *	24
26	61,1	40,3	4 700 *	67,9	38,7	3 200 *	26
28	58,1	38,9	4 300 *	64,7	37,2	3 100 *	28
30	54,9	37,4	4 000 *	61,4	35,6	2 900 *	30
32	51,6	35,7	3 800 *	57,9	33,8	2 800 *	32
34	48,1	33,7	3 600 *	54,2	31,8	2 700 *	34
36	44,4	31,5	3 400 *				36
38	40,4	29,0	3 200 *				38
40	36,0	26,1	3 100 *				40



Liftcrane Jib Capacities

26 100 kg Crane Counterweight
6 500 kg Carbody Counterweight
Extended Position Crawlers
360 Degree Rating

Meets
ASME B30.5
Requirements

8500-1

18,3 m Jib

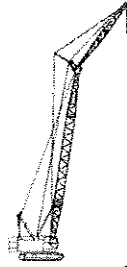
Load Radius (m)	10 Degree Offset			30 Degree Offset			Load Radius (m)
	Boom Angle (deg)	Jib Point Elev. (m)	Rated Load (kg)	Boom Angle (deg)	Jib Point Elev. (m)	Rated Load (kg)	
30,5 m Boom							
14	78,4	48,9	8 100 *				14
16	76,0	48,3	7 600 *				16
18	73,5	47,7	6 900 *				18
20	71,0	46,9	6 200 *	77,7	45,4	3 900 *	20
22	68,4	46,0	5 700 *	75,0	44,4	3 700 *	22
24	65,8	45,0	5 300 *	72,3	43,4	3 500 *	24
26	63,1	43,9	4 900 *	69,5	42,2	3 300 *	26
28	60,4	42,6	4 600 *	66,6	40,9	3 200 *	28
30	57,5	41,2	4 300 *	63,6	39,5	3 000 *	30
32	54,5	39,7	4 000 *	60,5	37,9	2 900 *	32
34	51,5	37,9	3 800 *	57,3	36,0	2 800 *	34
36	48,2	36,0	3 600 *	53,8	34,0	2 700 *	36
38	44,7	33,9	3 300				38
40	41,0	31,4	3 000				40
42	37,0	28,6	2 800				42
44	32,4	25,2	2 600				44
33,5 m Boom							
14	79,1	52,1	8 100 *				14
16	76,8	51,5	7 800 *				16
18	74,5	50,9	7 100 *				18
20	72,2	50,1	6 500 *	78,5	48,6	4 000 *	20
22	69,8	49,3	6 000 *	76,0	47,7	3 800 *	22
24	67,4	48,4	5 500 *	73,5	46,8	3 600 *	24
26	64,9	47,3	5 100 *	70,9	45,7	3 400 *	26
28	62,3	46,2	4 800 *	68,3	44,5	3 200 *	28
30	59,7	44,9	4 500 *	65,5	43,2	3 100 *	30
32	57,0	43,5	4 200 *	62,7	41,7	3 000 *	32
34	54,2	42,0	3 900	59,8	40,1	2 800 *	34
36	51,3	40,2	3 500	56,7	38,3	2 700 *	36
38	48,3	38,3	3 200				38
40	45,0	36,2	2 900				40
42	41,6	33,8	2 700				42
44	37,8	31,1	2 500				44



Liftcrane Jib Capacities

26 100 kg Crane Counterweight
6 500 kg Carbody Counterweight
Extended Position Crawlers
360 Degree Rating

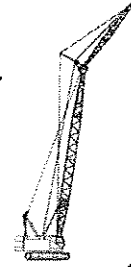
Meets
ASME B30.5
Requirements



8500-1

18,3 m Jib

Load Radius (m)	10 Degree Offset			30 Degree Offset			Load Radius (m)
	Boom Angle (deg)	Jib Point Elev. (m)	Rated Load (kg)	Boom Angle (deg)	Jib Point Elev. (m)	Rated Load (kg)	
36,6 m Boom							
16	77,6	54,7	8 000 *				16
18	75,4	54,1	7 400 *				18
20	73,2	53,4	6 800 *	79,2	51,8	4 000 *	20
22	71,0	52,6	6 200 *	76,9	51,0	3 800 *	22
24	68,7	51,8	5 700 *	74,5	50,1	3 600 *	24
26	66,4	50,8	5 300 *	72,1	49,1	3 400 *	26
28	64,0	49,7	5 000 *	69,7	48,0	3 300 *	28
30	61,6	48,5	4 600 *	67,2	46,8	3 200 *	30
32	59,1	47,2	4 100	64,6	45,4	3 000 *	32
34	56,6	45,8	3 800	61,9	44,0	2 900 *	34
36	53,9	44,3	3 400	59,1	42,3	2 800 *	36
38	51,2	42,5	3 100	56,3	40,5	2 700 *	38
40	48,3	40,6	2 800	53,2	38,5	2 600 *	40
42	45,3	38,5	2 600				42
44	42,0	36,2	2 400				44
46	38,6	33,5	2 200				46
48	34,8	30,5	2 000				48
39,6 m Boom							
16	78,3	57,8	8 100 *				16
18	76,2	57,3	7 600 *				18
20	74,1	56,6	7 000 *				20
22	72,0	55,9	6 400 *	77,6	54,3	3 900 *	22
24	69,9	55,1	6 000 *	75,4	53,4	3 700 *	24
26	67,7	54,2	5 500 *	73,2	52,5	3 500 *	26
28	65,5	53,2	5 000	70,9	51,5	3 400 *	28
30	63,3	52,1	4 500	68,6	50,3	3 200 *	30
32	61,0	50,9	4 000	66,2	49,1	3 100 *	32
34	58,6	49,6	3 700	63,7	47,7	3 000 *	34
36	56,2	48,1	3 300	61,2	46,2	2 900 *	36
38	53,7	46,6	3 000	58,6	44,6	2 800 *	38
40	51,1	44,8	2 700	55,9	42,8	2 700 *	40
42	48,3	42,9	2 500	53,0	40,8	2 600 *	42
44	45,5	40,8	2 300				44
46	42,5	38,5	2 100				46
48	39,2	35,9	1 900				48



Liftcrane Jib Capacities

26 100 kg Crane Counterweight
6 500 kg Carbody Counterweight
Extended Position Crawlers
360 Degree Rating

Meets
ASME B30.5
Requirements

8500-1

18,3 m Jib

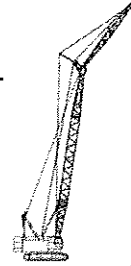
Load Radius (m)	10 Degree Offset			30 Degree Offset			Load Radius (m)
	Boom Angle (deg)	Jib Point Elev. (m)	Rated Load (kg)	Boom Angle (deg)	Jib Point Elev. (m)	Rated Load (kg)	
42,7 m Boom							
16	78,5	61,0	8 100 *				16
18	76,9	60,5	7 800 *				18
20	75,0	59,8	7 200 *				20
22	73,0	59,1	6 600 *	78,3	57,5	3 900 *	22
24	71,0	58,4	6 200 *	76,2	56,7	3 800 *	24
26	68,9	57,5	5 600	74,1	55,8	3 600 *	26
28	66,9	56,6	4 900	72,0	54,9	3 400 *	28
30	64,7	55,6	4 400	69,8	53,8	3 300 *	30
32	62,6	54,4	3 900	67,6	52,6	3 200 *	32
34	60,4	53,2	3 600	65,3	51,4	3 000 *	34
36	58,1	51,9	3 200	63,0	50,0	2 900 *	36
38	55,8	50,4	2 900	60,6	48,5	2 800 *	38
40	53,4	48,8	2 600	58,1	46,8	2 800 *	40
42	50,9	47,1	2 400	55,5	45,0	2 600	42
44	48,4	45,2	2 100	52,7	42,9	2 300	44
46	45,7	43,2	1 900				46
48	42,8	40,9	1 700				48
50	39,8	38,4	1 500				50
52	36,5	35,5	1 400				52
45,7 m Boom							
16	79,1	64,1	8 100 *				16
18	77,6	63,6	8 000 *				18
20	75,7	63,0	7 400 *				20
22	73,8	62,4	6 900 *	78,9	60,7	4 000 *	22
24	71,9	61,7	6 200 *	76,9	60,0	3 800 *	24
26	70,0	60,8	5 500	74,9	59,1	3 600 *	26
28	68,0	60,0	4 900	72,9	58,2	3 500 *	28
30	66,1	59,0	4 300	70,9	57,2	3 300 *	30
32	64,0	57,9	3 900	68,8	56,1	3 200 *	32
34	62,0	56,8	3 500	66,7	54,9	3 100 *	34
36	59,9	55,6	3 100	64,5	53,7	3 000 *	36
38	57,7	54,2	2 800	62,3	52,3	2 900 *	38
40	55,5	52,7	2 500	60,0	50,7	2 800 *	40
42	53,2	51,1	2 300	57,6	49,1	2 500	42
44	50,9	49,4	2 100	55,1	47,3	2 300	44
46	48,4	47,5	1 800				46
48	45,8	45,5	1 600				48
50	43,2	43,2	1 400				50
52	40,3	40,8	1 200				52
53	38,7	38,9	1 100				53



Liftcrane Jib Capacities

26 100 kg Crane Counterweight
6 500 kg Carbody Counterweight
Extended Position Crawlers
360 Degree Rating

Meets
ASME B30.5
Requirements



8500-1

18,3 m Jib

Load Radius (m)	10 Degree Offset			30 Degree Offset			Load Radius (m)
	Boom Angle (deg)	Jib Point Elev. (m)	Rated Load (kg)	Boom Angle (deg)	Jib Point Elev. (m)	Rated Load (kg)	
48,8 m Boom							
16	79,6	67,2	8 100 *				16
18	78,1	66,8	8 000 *				18
20	76,4	66,2	7 600 *				20
22	74,6	65,6	7 000 *	78,9	63,6	3 900 *	22
24	72,8	64,9	6 100	77,6	63,2	3 900 *	24
26	71,0	64,1	5 400	75,7	62,4	3 700 *	26
28	69,1	63,3	4 800	73,8	61,5	3 500 *	28
30	67,2	62,4	4 200	71,9	60,6	3 400 *	30
32	65,3	61,4	3 800	69,9	59,6	3 300 *	32
34	63,4	60,3	3 400	67,9	58,5	3 200 *	34
36	61,4	59,1	3 000	65,9	57,3	3 100 *	36
38	59,4	57,9	2 700	63,8	55,9	3 000 *	38
40	57,3	56,5	2 400	61,6	54,5	2 700	40
42	55,2	55,0	2 200	59,4	53,0	2 500	42
44	53,0	53,4	1 900	57,2	51,3	2 200	44
46	50,8	51,7	1 700	54,8	49,5	2 000	46
48	48,4	49,8	1 500	52,3	47,6	1 800	48
50	46,0	47,8	1 300				50
52	44,1	45,6	1 100				52
51,8 m Boom							
16	80,0	70,4	7 700 *				16
18	78,7	69,9	7 400 *				18
20	77,0	69,4	7 100 *				20
22	75,3	68,8	6 600 *	79,4	66,8	4 000 *	22
24	73,6	68,1	6 000 *	78,2	66,4	3 900 *	24
26	71,8	67,4	5 300	76,4	65,7	3 700 *	26
28	70,1	66,6	4 700	74,6	64,8	3 600 *	28
30	68,3	65,7	4 100	72,7	64,0	3 400 *	30
32	66,5	64,8	3 700	70,9	63,0	3 300 *	32
34	64,7	63,8	3 300	69,0	61,9	3 200 *	34
36	62,8	62,7	2 900	67,1	60,8	3 100 *	36
38	60,9	61,5	2 600	65,1	59,6	3 000 *	38
40	59,0	60,2	2 300	63,1	58,2	2 700	40
42	57,0	58,8	2 100	61,1	56,8	2 400	42
44	54,9	57,3	1 800	58,9	55,3	2 100	44
46	52,8	55,7	1 600	56,8	53,6	1 900	46
48	50,7	54,0	1 300	54,5	51,8	1 700	48
50	48,5	52,1	1 100	52,2	49,8	1 400	50

S/N: 8501896



Liftcrane Jib Capacities

26 100 kg Crane Counterweight
6 500 kg Carbody Counterweight
Extended Position Crawlers
360 Degree Rating

Meets
ASME B30.5
Requirements

8500-1

18,3 m Jib

Load Radius (m)	10 Degree Offset			30 Degree Offset			Load Radius (m)
	Boom Angle (deg)	Jib Point Elev. (m)	Rated Load (kg)	Boom Angle (deg)	Jib Point Elev. (m)	Rated Load (kg)	
54,9 m Boom							
18	79,3	73,0	6 800 *				18
20	77,5	72,5	6 500 *				20
22	75,9	72,0	6 200 *	79,9	70,0	4 000 *	22
24	74,3	71,3	5 900 *	78,7	69,6	3 900 *	24
26	72,6	70,7	5 200	77,0	68,9	3 800 *	26
28	70,9	69,9	4 600	75,3	68,1	3 600 *	28
30	69,3	69,1	4 100	73,5	67,3	3 500 *	30
32	67,5	68,2	3 600	71,8	66,3	3 400 *	32
34	65,8	67,2	3 200	70,0	65,4	3 300 *	34
36	64,0	66,2	2 800	68,2	64,3	3 200 *	36
38	62,2	65,0	2 500	66,3	63,1	2 900 *	38
40	60,4	63,8	2 200	64,4	61,9	2 600	40
42	58,5	62,5	1 900	62,5	60,5	2 300	42
44	56,6	61,1	1 700	60,5	59,1	2 100	44
46	54,7	59,6	1 400	58,5	57,5	1 800	46
48	52,7	58,0	1 200	56,4	55,9	1 600	48
50				54,3	54,1	1 100	50

Wind Conditions

TABLE OF CONTENTS

General	1
Operation Permitted/Operation Not Permitted:	
Boom	3
Boom with Jib	4

GENERAL



WARNING

TIPPING CRANE HAZARD!

Judgment and experience of qualified operators, job planners and supervisors must be used to compensate for affect of wind on lifted load and boom and/or jib by reducing ratings, reducing operating speeds, boom/jib combination or both.

Failing to observe this precaution can cause crane to tip or boom and/or jib to collapse. Death or serious injury to personnel can result.

Wind adversely affects lifting capacity and stability as shown in Figure 1. The result could be loss of control over the load and crane, even if the load is within the crane's capacity.

Wind speed (to include wind gusts) must be monitored by job planners and supervisors.

Beware that wind speed at the boom or jib point can be greater than wind speed at ground level. Also beware that the larger the sail area of the load, the greater the wind's affect on the load.

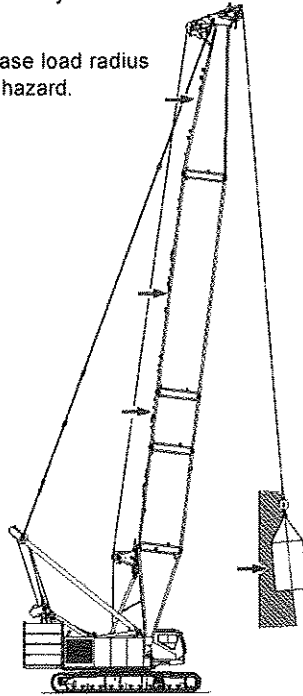
As a general rule, ratings and operating speeds must be reduced when:

Wind causes load to swing forward past allowable operating radius or sideways past either boom hinge pin.

Wind Conditions

Forward stability is affected by wind on the rear of the boom.

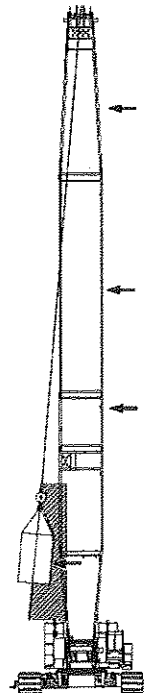
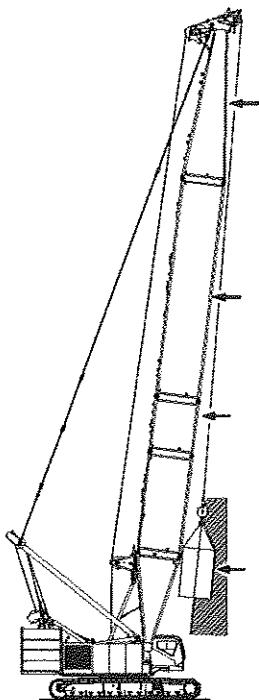
This condition can increase load radius and result in an overload hazard.



A910

Backward stability is affected by wind on the front of the boom.

This condition is especially dangerous when the boom is at or near the maximum angle when operating without load.



The wind's affect on the side of the load can cause the load to swing out past the boom hinge pin.

This condition can result in excessive side load forces on the boom.

FIGURE 1

Wind Conditions

Boom

Operation Permitted

Operation is permitted in steady winds or gusts up to the maximum speed given in Table 1 provided the lifted load does not exceed capacity chart percentage.

Wind speed to be measured at boom point elevation.

Operation Not Permitted

Operation is not permitted when the wind speed exceeds the values listed in Table 1 for a given capacity chart percentage.

When wind exceeds 36 mph (16 m/s), lower the boom to the ground.

Table 1: Allowable Wind Speeds and Gusts for Various Capacity Chart Percentages

Boom Length ft (m)	40 - 70 (12,2 - 21,3)	80 - 100 (24,4 - 30,5)	110 - 200 (33,5 - 61,0)
Percent of Capacity Chart	Maximum Wind Speed mph (m/s)		
100	36 (16)	27 (12)	22.5 (10)
90	36 (16)	33.8 (14)	27 (12)
80	36 (16)	36 (16)	36 (16)

Operation Not Permitted above 36 mph (16 m/s)

Wind Conditions

Boom with Jib

Operation Permitted

Operation is permitted in steady winds or gusts up to the maximum speed given in Table 2 provided the lifted load does not exceed capacity chart percentage.

Wind speed to be measured at jib point elevation.

Operation Not Permitted

Operation is not permitted when the wind speed exceeds the values listed in Table 2 for a given capacity chart percentage.

When wind exceeds 36 mph (16 m/s), lower the boom and jib to the ground.

Table 2: Allowable Wind Speeds and Gusts for Various Capacity Chart Percentages

Boom Length ft (m)	80 - 130 (24,4 - 39,6)	140 - 160 (42,7 - 48,8)	170 - 180 (51,8 - 54,9)
Jib Length ft (m)	30 - 60 (9,1 - 18,3)		
Percent of Capacity Chart	Maximum Wind Speed mph (m/s)		
100	27 (12)	22.5 (10)	22.5 (10)
90	36 (16)	27 (12)	27 (12)
80	36 (16)	36 (16)	33.8 (14)
70	36 (16)	36 (16)	36 (16)

Operation Not Permitted above 36 mph (16 m/s)